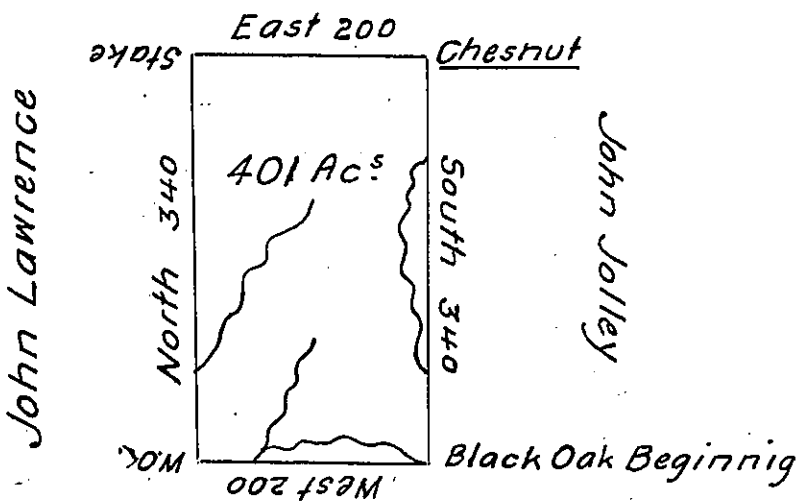


W^m Mayberry



Francis Nichols

The above is a Draught of a Survey made the 29th of January 1795 ~ in pursuance of a Warrant Granted to Charles Jolly ~ for 400 Acres of Land Dated the 4th of January 1794, Situate North and West of the River Ohio on the Waters of Ganaquenessing Creek Adjoining Land Granted to William Mayberry Called Santee Containing four Hundred & one Acres and allowance of Six p^{ts} Cent for Roads To Daniel Brodhead Esq^r Surveyor General ~ Jonathan Leet. D.S.

IN TESTIMONY that the above is a copy of the original remaining on file in the Department of Internal Affairs of Pennsylvania, made conformably to an Act of Assembly approved the 16th day of February, 1833, I have hereunto set my Hand and caused the Seal of said Department to be affixed at Harrisburg, this nineteenth day of June 1905 ~

Loac R. Brown
Secretary of Internal Affairs.